

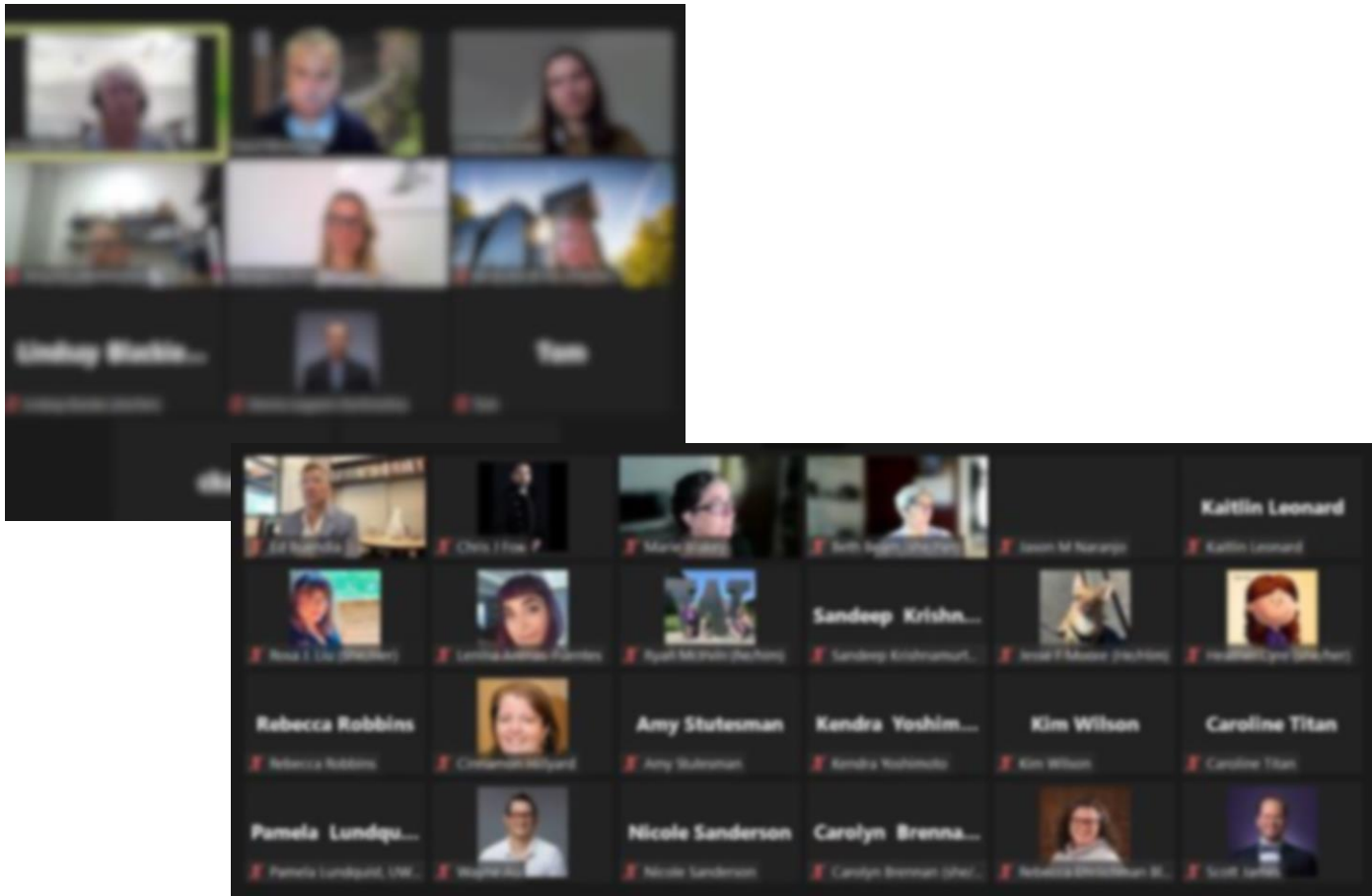
Community Forum

SESSION NOTES
JUNE 2-3, 2022

BOTHELL

Online Sessions Summary

Participants in both online sessions were asked to share the opportunities they would prioritize and the reason why they would do so. Presented are a selection of the comments received.



- **Integrate the need for more dining options with sustainability.** Encourage small / local community business partnerships.
- With the new residential development, **the food program will be a significant change** and will mean extended hours.
- **Resident students will need amenities beyond food** to include recreation, cultural events, entertainment, collaboration. Interest in **evening classes** will grow.
- **Faculty members need technology resources for online instruction.** Prioritize solutions that support in person and online simultaneously. Tackle via technology and supporting faculty in the use of the tools.
- **Office space use changes represent a large cultural shift** for the university – **change management** will be needed to most effectively introduce and implement such changes
- **Office underutilization is not sustainable** energy-wise. Office space allocation changes need to be done equitably.
- Consider allocating **space for student employees, and their location** relative to other departments and spaces. Balancing welcoming spaces and privacy is important.
- **Strategically align departments and space types** to provide intention to campus buildings and reduce inefficiencies
- **Foster engagement and public speaking**, and diverse / divergent opinions (‘Brave Spaces’)
- **Co-locate student services** to better support students, also provide centrally online / virtually
- **Improve virtual / physical wayfinding** and wayfinding resources. There isn’t one integrated welcome desk.

In-Person Engagement Summary

We asked community members to share the opportunities they would prioritize and the reason why they would do so. Presented are a few highlights.

General / Add'l opportunities

- Expand hours & share calendars
- Misc. space improvements
- Improve cell & wi-fi service
- Better support indigenous & first gen students
- Better support for parent students
- Expand the work of the Diversity Center
- Improve campus safety
- Improve academic advisor access / availability
- Improve ARC non-scheduled use access
- Improve in-person and online wayfinding
- Improve tools for clubs
- Ensure transparency in decision making

Strategically located amenities with evening hours & adjacent collaboration space

- Top priority: increase food options
- Extend library hours
- Synchronize event and class schedules
- Provide spaces for a variety of events
- Create spaces for informal gathering, socialization, activity (gym, outdoors), and integrate art



Shift parking policies and provide other quality of life benefits

- Reducing parking costs is a high priority
- Consider lower / free pricing based on economic need, student working status, faculty status etc.
- Offer more flexible pricing options to adapt to different university member needs
- Improve public transit options (
- Improve signal and wayfinding within garages
- Adopt visitor and event parking policies which include free parking to increase on-campus visits and event attendance

Concentrate off-campus academic and administrative function on campus

- Create spaces for accessing and interacting with administrative staff / decision makers
- Locate Human Resources on campus
- Facilitate inter-campus relationships by supporting students to take courses on other campuses
- Nurture areas for free sharing of ideas and conversation

Emerging Opportunities – In-Person Themes Summary

Strategically align departments and space types, and schedule office and non-specialized lab space centrally

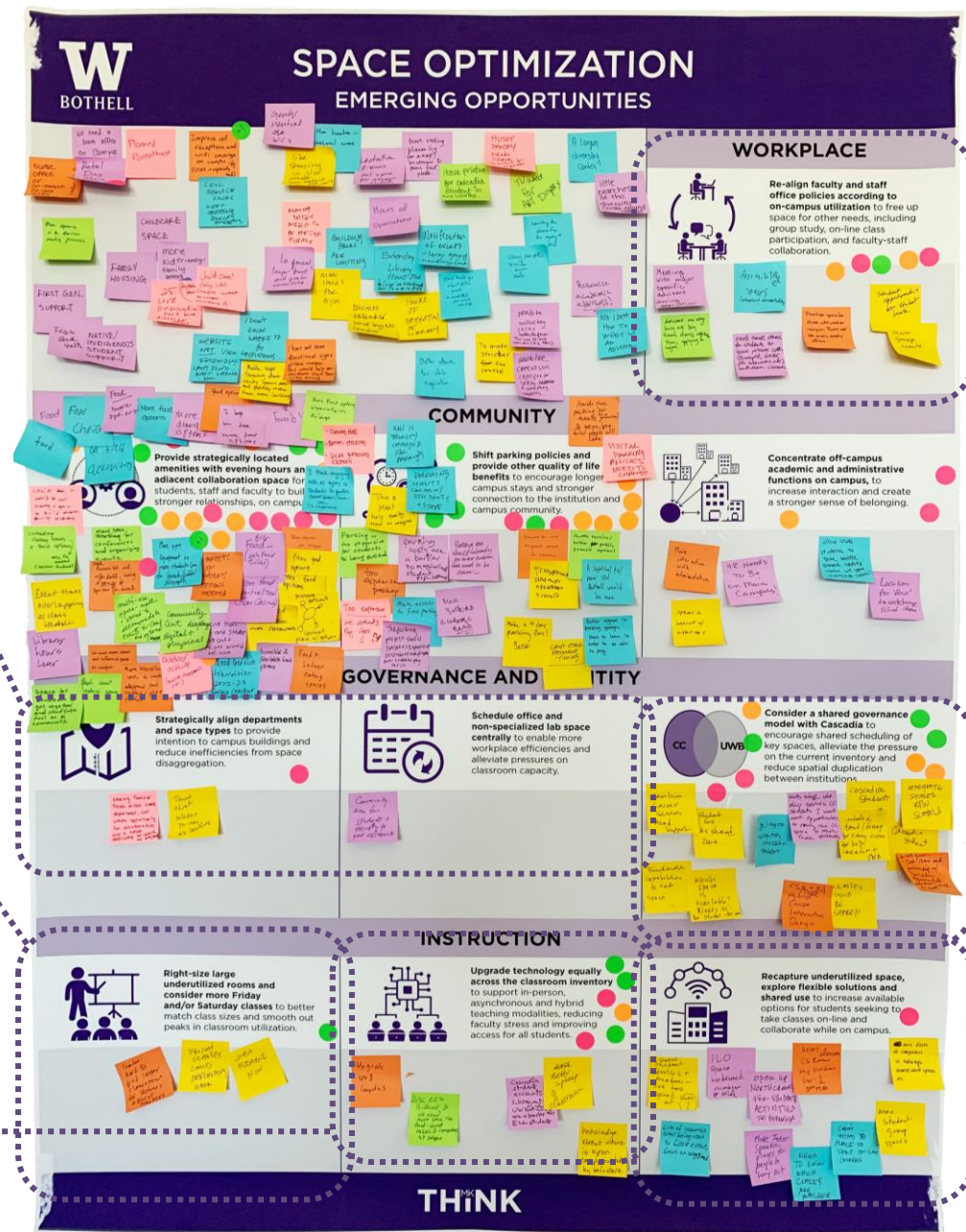
- Create spaces for intra-departmental collaboration
- Create community spaces for student-faculty collaboration

Right-size large underutilized rooms and consider more Friday and/or Saturday classes

- Friday classes would work
- Provide job flexibility
- Hard to find large classrooms for guest speakers (unclear if space or access issue)

Upgrade technology equally across the classroom inventory

- Upgrade computers
- Disc 256 setup recommended for hi-flex teaching
- NetID a barrier for CC students taking classes at UWB
- Improve classroom upkeep
- Better inform students on lab classroom resources and associated available software.



Re-align faculty and staff office policies according to on-campus utilization

- Improve advisor services and availability during key academic periods
- Expand the variety of space types and accessibility to align with the university member needs
- Enhance student group events and community engagement

Consider a shared governance model with Cascadia

- Particularly favored by CC students
- Create a shared zone for student services, combine student services, academic support
- Locate dining centrally to both institutions
- Improve cost-sharing for facilities / events
- Provide spaces for staff to reach CC students
- Need CC printers in library
- Increase shared coursework, including interdisciplinary courses

Recapture underutilized space, explore flexible solutions and shared use

- Consolidate student services and academic services into one hub (at / near library?)
- Increase engagement; resources are not fully being used
- Increase the number of informal, shared, and computer-enabled workspaces
- Promote student-centric spaces designed for social and/or group academic uses
- Reduce NCEC cost for student activities