

# STEERING COMMITTEE

## DEPARTMENT/DIVISION ADJACENCY ASSIGNMENT - PAGE 1

### Instructions

Draw “shaped-arrows” starting at your department connecting to another department that you interact with.

Please use either the square, circle, or triangle at the end of your arrow based on the frequency that most closely resembles how often you interact with that department.

If you interact with an external entity, please draw the arrow facing outwards from the circle and specify in text which entity this refers to.



### Frequency Arrows

- INTERACT DAILY
- INTERACT WEEKLY
- ◁ INTERACT MONTHLY

# STEERING COMMITTEE

## DEPARTMENT/DIVISION ADJACENCY ASSIGNMENT - PAGE 2

	MY DIVISION	DIVISION(S) I INTERACT WITH
CITY MANAGER	ADMINISTRATION	ADMINISTRATION
	ECONOMIC DEVELOPMENT	ECONOMIC DEVELOPMENT
	BUSINESS & COMMUNITY ENGAGEMENT	BUSINESS & COMMUNITY ENGAGEMENT
	CIVIC ART	CIVIC ART
	MEDIA SERVICES	MEDIA SERVICES
	SOCIAL SERVICES/RENTAL RESOURCES	SOCIAL SERVICES/RENTAL RESOURCES
	CITY CLERK/ATTORNEY	CITY CLERK/ATTORNEY
	ADMINISTRATION	ADMINISTRATION
	TRANSPORTATION	TRANSPORTATION
	ENGINEERING	ENGINEERING
ENGR & T	CIP	CIP
	ADMINISTRATION	ADMINISTRATION
	STREETS	STREETS
	WASTEWATER	WASTEWATER
	WATER	WATER
	FLEET	FLEET
	FACILITIES	FACILITIES
	ENVIRONMENTAL RESOURCES	ENVIRONMENTAL RESOURCES
	ADMINISTRATION	ADMINISTRATION
	PLANNING	PLANNING
PW - UTIL. & OPS	PROPERTY MANAGEMENT/OPEN SPACE	PROPERTY MANAGEMENT/OPEN SPACE
	SUSTAINABILITY	SUSTAINABILITY
	BUILDING	BUILDING
	TRAFFIC	TRAFFIC
	PATROL	PATROL
	INVESTIGATIVE SERVICES	INVESTIGATIVE SERVICES
	RECORDS	RECORDS
	PARKING ENFORCEMENT	PARKING ENFORCEMENT
	OPERATIONS	OPERATIONS
	EMERGENCY SERVICES MANAGEMENT	EMERGENCY SERVICES MANAGEMENT
CDS	PREVENTION SERVICES	PREVENTION SERVICES
	TRAINING & EMERGENCY PREPAREDNESS	TRAINING & EMERGENCY PREPAREDNESS
	RECREATION/REGISTRATIONS	RECREATION/REGISTRATIONS
	PARATRANSIT	PARATRANSIT
	SENIOR SERVICES	SENIOR SERVICES
	SPECIAL EVENTS	SPECIAL EVENTS
	PARKS	PARKS
	URBAN FORESTRY	URBAN FORESTRY
	AQUATICS	AQUATICS
	HR & MANAGEMENT	HR & MANAGEMENT
POLICE	IS	IS
	FINANCE/ADMIN & BUDGET	FINANCE/ADMIN & BUDGET
	FINANCE/FISCAL SERVICES	FINANCE/FISCAL SERVICES
	ADMINISTRATION	ADMINISTRATION
	ECONOMIC DEVELOPMENT	ECONOMIC DEVELOPMENT
	BUSINESS & COMMUNITY ENGAGEMENT	BUSINESS & COMMUNITY ENGAGEMENT
	CIVIC ART	CIVIC ART
	MEDIA SERVICES	MEDIA SERVICES
	SOCIAL SERVICES/RENTAL RESOURCES	SOCIAL SERVICES/RENTAL RESOURCES
	CITY CLERK/ATTORNEY	CITY CLERK/ATTORNEY
FIRE	ADMINISTRATION	ADMINISTRATION
	TRANSPORTATION	TRANSPORTATION
	ENGINEERING	ENGINEERING
	CIP	CIP
	ADMINISTRATION	ADMINISTRATION
	STREETS	STREETS
	WASTEWATER	WASTEWATER
	WATER	WATER
	FLEET	FLEET
	FACILITIES	FACILITIES
P&R	ENVIRONMENTAL RESOURCES	ENVIRONMENTAL RESOURCES
	ADMINISTRATION	ADMINISTRATION
	PLANNING	PLANNING
	PROPERTY MANAGEMENT/OPEN SPACE	PROPERTY MANAGEMENT/OPEN SPACE
	SUSTAINABILITY	SUSTAINABILITY
	BUILDING	BUILDING
	TRAFFIC	TRAFFIC
	PATROL	PATROL
	INVESTIGATIVE SERVICES	INVESTIGATIVE SERVICES
	RECORDS	RECORDS
ADMIN	PARKING ENFORCEMENT	PARKING ENFORCEMENT
	OPERATIONS	OPERATIONS
	EMERGENCY SERVICES MANAGEMENT	EMERGENCY SERVICES MANAGEMENT
	PREVENTION SERVICES	PREVENTION SERVICES
	TRAINING & EMERGENCY PREPAREDNESS	TRAINING & EMERGENCY PREPAREDNESS
	RECREATION/REGISTRATIONS	RECREATION/REGISTRATIONS
	PARATRANSIT	PARATRANSIT
	SENIOR SERVICES	SENIOR SERVICES
	SPECIAL EVENTS	SPECIAL EVENTS
	PARKS	PARKS

Frequency Arrows

○ INTERACT DAILY

□ INTERACT WEEKLY

◁ INTERACT MONTHLY

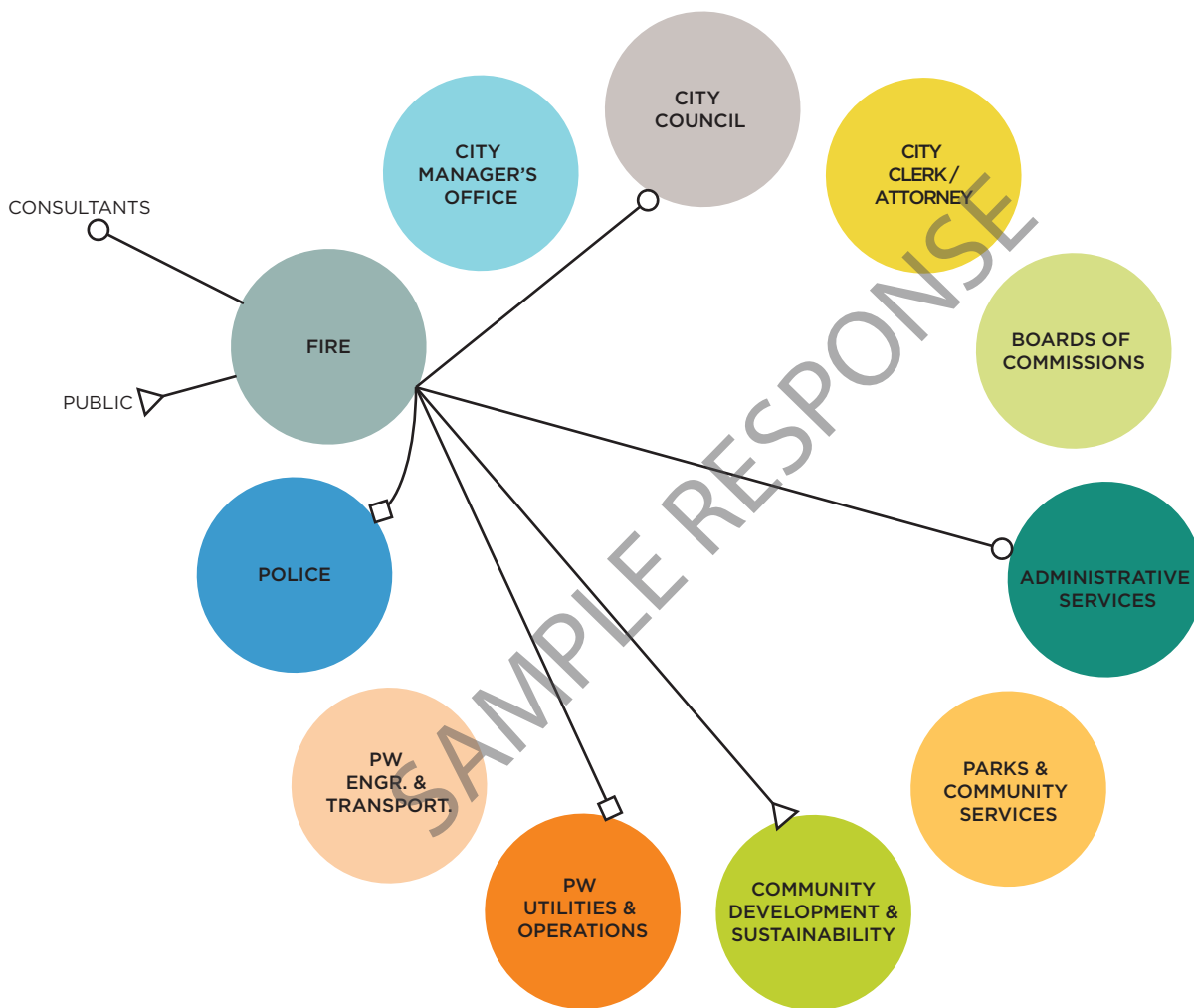
# STEERING COMMITTEE DEPARTMENT/DIVISION ADJACENCY ASSIGNMENT - PAGE 1

## Instructions

Draw “shaped-arrows” starting at your department connecting to another department that you interact with.

Please use either the square, circle, or triangle at the end of your arrow based on the frequency that most closely resembles how often you interact with that department.

If you interact with an external entity, please draw the arrow facing outwards from the circle and specify in text which entity this refers to.



## Frequency Arrows

- INTERACT DAILY
- INTERACT WEEKLY
- △ INTERACT MONTHLY

# STEERING COMMITTEE

## DEPARTMENT/DIVISION ADJACENCY ASSIGNMENT - PAGE 2

